



# GMT MONTHLY MEMBERSHIP PROGRESS REPORT

Results as of: 2/29/2020

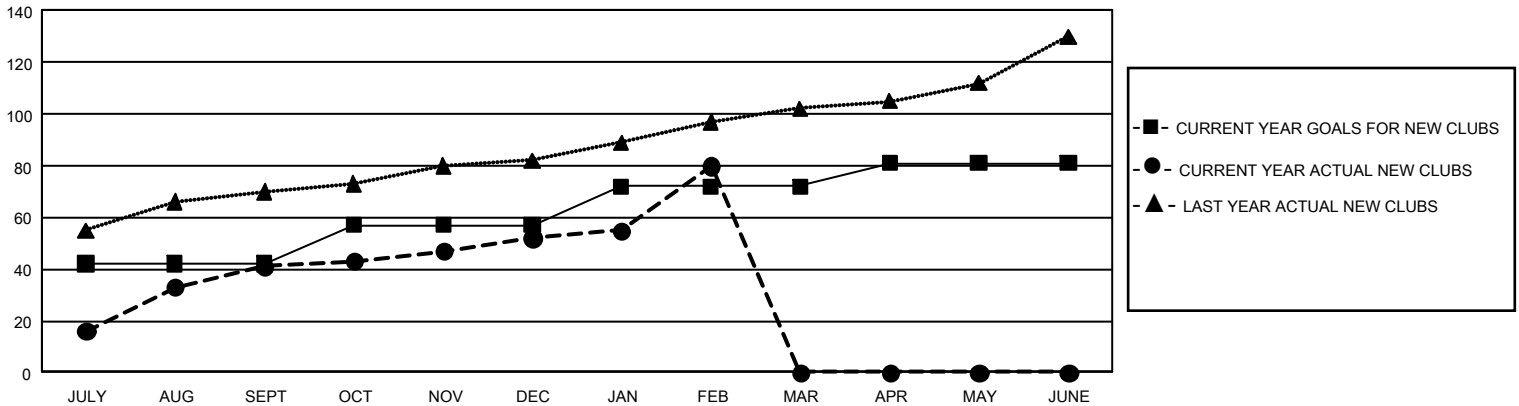
## GMT Constitutional Area 6, Group P

GMT: OPEN

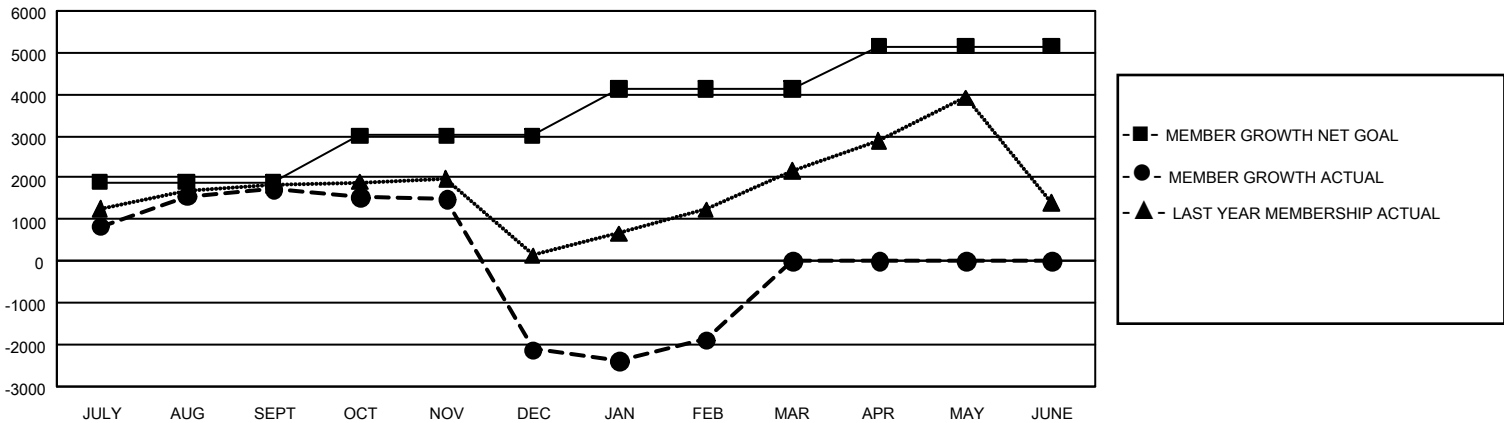
REPORT DOES NOT INCLUDE CLUBS IN UNDISTRICTED AREAS.

Clubs				Members			
RESULTS FOR 2019-2020				RESULTS FOR 2019-2020			
QUARTER	NEW CLUB GOAL	NEW CLUBS	DROPPED CLUBS	QUARTER	MEMBER GROWTH NET GOAL	MEMBER GROWTH ACTUAL	DROPPED MEMBERS ACTUAL (including transfers)
JULY/AUG/SEPT	126	41	7	JULY/AUG/SEPT	5,670	3,482	1,497
OCT/NOV/DEC	45	11	66	OCT/NOV/DEC	3,345	1,284	4,918
JAN/FEB/MAR	45	28	9	JAN/FEB/MAR	3,345	2,651	1,801
APR/MAY/JUNE	27	0	0	APR/MAY/JUNE	3,120	0	0

GOALS AND ACTUAL NEW CLUBS CUMULATIVE



GOALS AND ACTUAL MEMBERS CUMULATIVE



DROPPED CLUBS: 82

936 CLUBS OF 1,613 ADDED 1 OR MORE NEW MEMBERS

GENDER DISTRIBUTION

MALE 51,395 (77.70%)  
FEMALE 14,751 (22.30%)

DROPPED MEMBERS

DECEASED	109
CLUB CANCELLED	2,105
OTHER	6,000
<b>TOTAL</b>	<b>8,214</b>

[CLICK HERE FOR CUMULATIVE MEMBERSHIP DATA](#)

TOTAL FAMILY UNIT MEMBERS 26,696

FAMILY MEMBERS PAYING HALF DUES 16,355